

Product Specifications - Application Features

Premium-grade, recessed, lay-in direct/indirect coffered T-Bar troffer with modern styling and high visual comfort. For use with indoor applications where low-glare, high-quality and ease of installation are required. This luminaire's basket-shaped, perforated metal shield provides both direct and indirect light distribution for primary and ambient lighting which makes it ideal for most office environments and corridors.



Product Specifications

Optical System

Shields are perforated for direct and indirect illumination and contain a translucent opal white acrylic overlay diffuser for visual comfort. Indirect reflectors are precision formed and contoured to provide soft, low-glare, indirect illumination, while maintaining high-efficiency and a wide uniform lighting distribution.

Mounting

Holes provided for chain-mounting support to building structure. This luminaire has been specifically designed for T-Bar applications. Integral earthquake clips.

Construction

Die-formed and riveted, heavy-gauge steel housing assembly. Die-formed, perforated cold rolled steel shielding. Precision-formed steel reflector.

Finish

White polyester powder painted visible surfaces.

Electrical

Rotary lampholders ensure positive lamp retention. All electrical components are CSA approved or UL listed. See product selection for optional ballasts. Sufficient knockouts are provided for connections and through wiring.

Approvals

Approved to CSA and UL standards (UL, or equivalent, marked only when specified).

Notes

Product Features

- Available in 1 x 4, 2 x 2 and 2 x 4 configurations
- Available with 1, 2 or 3 lamps
- Translucent, opal white acrylic diffuser overlay
- Single, basket-shaped perforated metal shield
- Available in T5, T8 and PLL/Biax configurations

Options & Adders

- Lamps available (please specify colour temperature and wattage)
- Multi-level switching
- Dimmable ballast
- Emergency ballast
- Radio interference filter (120V - 277V)
- Drywall flange kits available (see page 243)
- Non-perforated matte white shield
- 20 gauge riveted or welded construction
- Flexible metal whip - 6 foot x 3/18 gauge conductors
- Modular wiring system (consult factory)

Applications

- Classrooms
- Corridors
- Office Areas
- Retail Stores & Supermarkets



**Certain features and configurations may not be available. Consult the factory for more information.*

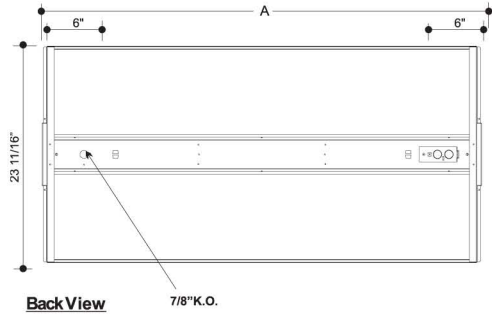
TDCW - Troffer Dish Centre Basket

Premium-Grade Recessed Direct/Indirect Centre Basket T-Bar Luminaire

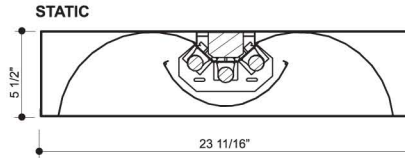
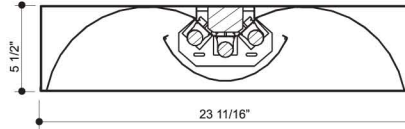
Photometrics - Please consult www.viscor.com for photometric results.

ProductDetails

Dimensions



MODEL	NOMINAL LENGTH	A
1x4	48"	11 3/4"
2x2	24"	23 3/4"
2x4	48"	47 3/4"



AIR SUPPLY/RETURN

End Views

Ordering



- Size (Width x Length)**
1x4
2x2
2x4
- No. of Lamps**
1L
2L
3L
4L*
*2x4 PLL only
- Lamp Type**
T5
T5HO
T8
PLL
- Lamp Watts**
See Table below
- Ballast Type**
N - Instant Start
P - Prog. Start
R - Rapid Start
- Voltage**
120 - 120V
347 - 347V
UNV - 120-277V
UN4 - 347-480V
- Air Handling Options**
 A1 Air Supply/Return Slots
- Ballast Options**
(See Option Code Section For More Information)
 B01 Ballast Disconnect - In-line Power Disconnect (CSA-UL Req'd For Voltages above 150v)
 B02 Dimming Addressable Digital (dali)
 B03 Dimming Low Voltage
 B04 Dimming Line Voltage
 B08 Ballast - High Ballast Factor
 B09 Ballast - Low Ballast Factor
 B30 Emergency Lighting Battery Pack Spec Grade
 B33 Emergency Lighting Battery Pack 1-lamp
 B34 Emergency Lighting Battery Pack 2-lamp

Housing Construction Options (select one only)

White perforated shield is standard

- C06 Housing 20 Gauge Riveted
- C07 Housing 20 Gauge Welded
- C25 Shield Non-Perforated Matte White

Packaging Options

- K0 Bulk Pack

Fusing and Breaker Options (select one only)

- T5 Fuseholder, In-line Double Pole
- T6 Fuseholder, In-line Single Pole

Wiring Options

- V09 Flexible Whip (standard 6' X 3-18 Ga.)
- V19 Modular Wiring System. (consult Factory.)
- V25 Radio Frequency Filter

Approval and Rating Options

- X6 USA Market
- X7 CSA and USA Market

Other options may be available.

Example:

TDCW2x42L-T528PUNV-B01C25

Lamp Watts

Size	Nom. Lamp Watts			
	T5	T5HO	T8	PLL/Biax
1x4	28	54	32	40, 50 55
2x2	14	24	17	40, 50 55
2x4	28	54	32	40, 50, 55

Certain configurations may not be available. Consult the factory for more information.

Note: For recessed drywall applications use either a 1x4, 2x2 or 2x4 flange kit (page 243).