

## Product Specifications - Application Features

Premium-grade, recessed, lay-in direct/indirect coffered T-Bar troffer with modern styling and high visual comfort. For use with indoor applications where low-glare, high-quality, ease of installation and maintenance are required. This luminaire's basket-shaped, ribbed linear acrylic shield provides both direct and indirect light distribution for primary and ambient light which makes it ideal for most office environments and corridors.



### Product Specifications

#### Optical System

Ribbed linear acrylic lens for direct and indirect illumination provide high-efficiency and visual comfort. Indirect reflectors are precision formed and contoured to provide soft, low-glare, indirect illumination, while maintaining high-efficiency and a wide, uniform light distribution. Optional 98% high performance reflector available.

#### Mounting

This luminaire has been specifically designed for T-Bar applications. Holes provided for chain-mounting support to building structure. Integral earthquake clips.

#### Construction

Die-formed and riveted, heavy-gauge steel housing assembly. Precision-formed steel reflector. Die-formed, perforated cold rolled steel shielding. Optional air handling available.

#### Finish

White polyester powder painted visible surfaces.

#### Electrical

Rotary lampholders ensure positive lamp retention. All electrical components are CSA approved or UL listed. See product selection for optional ballasts. Sufficient knockouts are provided for connections and through wiring.

#### Approvals

Approved to CSA and UL standards (UL, or equivalent, marked only when specified).

#### Notes

---

---

---

---

---

---

---

---

---

---

---

### Product Features

- Available in 1 x 4, 2 x 2, 2 x 4 and 20 x 60 configurations
- Available with 1, 2 or 3 lamps
- High-efficiency clear ribbed acrylic lens
- Available in T5, T8 and PLL/Biax configurations

### Options & Adders

- Lamps available (please specify colour temperature and wattage)
- Multi-level switching
- Dimmable ballast
- Emergency ballast
- Radio interference filter (120V - 277V)
- Drywall flange kits available (see page 243)
- 20 gauge heavy-duty construction
- Air supply/return slots
- 98% high performance white reflector available
- Flexible metal whip - 6 foot x 3/18 gauge conductors
- Modular wiring system (consult factory)

### Applications

- Classrooms
- Corridors
- Office Areas
- Retail Stores



\*Certain features and configurations may not be available. Consult the factory for more information.

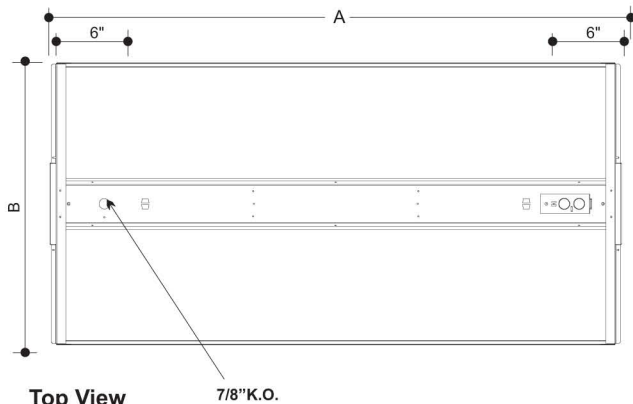
# TDEW - Troffer Dish High-Efficiency Basket

Premium-Grade Recessed High-Efficiency Centre Basket T-Bar Luminaire

Photometrics - Please consult [www.viscor.com](http://www.viscor.com) for photometric results.

## ProductDetails

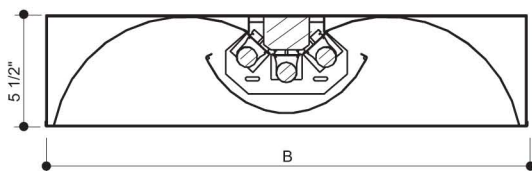
### Dimensions



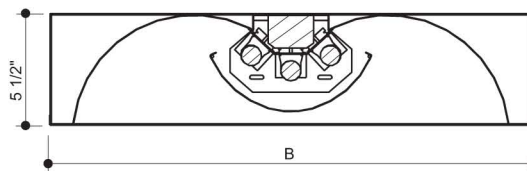
MODEL	NOMINAL LENGTH	A	B
1x4	48"	47 3/4"	11 11/16"
2x2	24"	23 3/4"	23 3/16"
2x4	48"	47 3/4"	23 3/16"
20 X 60	60"	59 3/4"	19 11/16"

Top View

7/8" K.O.



STATIC  
End Views



AIR SUPPLY/RETURN

### Ordering



- Size (Width x Length)**  
1x4  
2x2  
2x4  
20x60
- No. of Lamps**  
1L  
2L  
3L
- Lamp Watts**  
See table below
- Lamp Type**  
T5  
T5HO  
T8  
PLL
- Voltage**  
120 - 120V  
347 - 347V  
UNV - 120 - 277V  
UN4 - 347 - 480V
- Ballast Type**  
N - Instant Start  
P - Prog. Start  
R - Rapid Start

#### Air Handling Options

- A1 Air Supply/Return Slots

#### Ballast Options

(See Option Code Section For More Information)

- B01 Ballast Disconnect - In-line Power Disconnect (CSA-UL Req'd For Voltages above 150v)
- B02 Dimming Addressable Digital (dali)
- B03 Dimming Low Voltage
- B04 Dimming Line Voltage
- B08 Ballast - High Ballast Factor
- B09 Ballast - Low Ballast Factor
- B30 Emergency Lighting Battery Pack Specification Grade
- B33 Emergency Lighting Battery Pack 1-lamp
- B34 Emergency Lighting Battery Pack 2-lamp

#### Packaging Options

- K0 Bulk Pack

#### Fusing and Breaker Options (select one only)

- T5 Fuseholder, In-line Double Pole
- T6 Fuseholder, In-line Single Pole

#### Reflector Options

- VF7 Reflector Solid High Performance White (98% Reflectance)

#### Wiring Options

- V09 Flexible Whip (standard 6' X 3-18 Ga. )
- V19 Modular Wiring System. (consult factory)
- V25 Radio Frequency Filter

#### Approval and Rating Options

- X6 USA Market
- X7 CSA and USA Market

Other options may be available.

#### Example:

TDEW2x42L-T5HO54PUNV-B01

#### Lamp Watts

Size	Nom. Lamp Watts			
	T5	T5HO	T8	PLL/Biax
1x4	28	54	32	-
2x2	14	24	17	40, 50, 55
2x4	28	54	32	-
20x60	28	54	32	-

Certain configurations may not be available. Consult the factory for more information.

Note: For recessed drywall applications, use either a 2x2 or 2x4 flange kit (p.243).